



Quantifying the seasonal and interannual variability of North American isoprene emissions using satellite observations of the formaldehyde column

Paul I. Palmer,^{1,2} Dorian S. Abbot,¹ Tzung-May Fu,¹ Daniel J. Jacob,¹ Kelly Chance,³ Thomas P. Kurosu,³ Alex Guenther,⁴ Christine Wiedinmyer,⁴ Jenny C. Stanton,⁵ Michael J. Pilling,⁵ Shelley N. Pressley,⁶ Brian Lamb,⁶ and Anne Louise Sumner⁷

Received 20 September 2005; revised 19 December 2005; accepted 14 February 2006; published 27 June 2006.

[1] Quantifying isoprene emissions using satellite observations of the formaldehyde (HCHO) columns is subject to errors involving the column retrieval and the assumed relationship between HCHO columns and isoprene emissions, taken here from the GEOS-CHEM chemical transport model. Here we use a 6-year (1996–2001) HCHO column data set from the Global Ozone Monitoring Experiment (GOME) satellite instrument to (1) quantify these errors, (2) evaluate GOME-derived isoprene emissions with in situ flux measurements and a process-based emission inventory (Model of Emissions of Gases and Aerosols from Nature, MEGAN), and (3) investigate the factors driving the seasonal and interannual variability of North American isoprene emissions. The error in the GOME HCHO column retrieval is estimated to be 40%. We use the Master Chemical Mechanism (MCM) to quantify the time-dependent HCHO production from isoprene, α - and β -pinenes, and methylbutenol and show that only emissions of isoprene are detectable by GOME. The time-dependent HCHO yield from isoprene oxidation calculated by MCM is 20–30% larger than in GEOS-CHEM. GOME-derived isoprene fluxes track the observed seasonal variation of in situ measurements at a Michigan forest site with a –30% bias. The seasonal variation of North American isoprene emissions during 2001 inferred from GOME is similar to MEGAN, with GOME emissions typically 25% higher (lower) at the beginning (end) of the growing season. GOME and MEGAN both show a maximum over the southeastern United States, but they differ in the precise location. The observed interannual variability of this maximum is 20–30%, depending on month. The MEGAN isoprene emission dependence on surface air temperature explains 75% of the month-to-month variability in GOME-derived isoprene emissions over the southeastern United States during May–September 1996–2001.

Citation: Palmer, P. I., et al. (2006), Quantifying the seasonal and interannual variability of North American isoprene emissions using satellite observations of the formaldehyde column, *J. Geophys. Res.*, *111*, D12315, doi:10.1029/2005JD006689.

1. Introduction

[2] Emissions of volatile organic compounds (VOCs) from the terrestrial biosphere have important implications

for tropospheric ozone (O_3) [Wang and Shallcross, 2000], organic aerosols [Claeys et al., 2004], and climate change [Sanderson et al., 2003]. Local VOC emission data, representative of scales less than 1 km, are difficult to extrapolate, and consequently the magnitude and variability of these emissions is not well understood on continental scales. Standard emission inventories based on ecosystem data and emission factors [Guenther et al., 2005] are poorly constrained. We have shown previously that observations of formaldehyde (HCHO) columns from the Global Ozone Monitoring Experiment (GOME) satellite instrument [Chance et al., 2000] provide information to estimate biogenic VOC emissions, specifically isoprene emissions, on a global scale and with resolution of the order of 100 km [Palmer et al., 2003]. We examine here the quantitative value of these data for better understand-

¹Division of Engineering and Applied Sciences, Harvard University, Cambridge, Massachusetts, USA.

²Now at the School of Earth and Environment, University of Leeds, Leeds, UK.

³Harvard-Smithsonian Center for Astrophysics, Cambridge, Massachusetts, USA.

⁴National Center for Atmospheric Research, Boulder, Colorado, USA.

⁵Department of Chemistry, University of Leeds, Leeds, UK.

⁶Department of Civil and Environmental Engineering, Washington State University, Pullman, Washington, USA.

⁷Battelle, Columbus, Ohio, USA.

ing the variability of isoprene emissions during the North American growing season.

[3] Formaldehyde is a high yield product of VOC oxidation. Its atmospheric abundance is determined by a balance between production from the atmospheric oxidation of VOCs and losses from oxidation by the hydroxyl radical (OH) and photolysis, resulting in a lifetime of a few hours. Formaldehyde columns measured from space therefore provide constraints on the underlying reactive VOC emissions. Over North America during summer the dominant VOC driving HCHO variability is biogenic isoprene. *Palmer et al.* [2003] showed good correspondence between HCHO columns measured by GOME and those simulated using the GEOS-CHEM chemical transport model (CTM) (Appendix A) with isoprene emissions from the Global Emission Inventory Activity (GEIA) [*Guenther et al.*, 1995]. The GEOS-CHEM CTM had only a 10% mean positive bias against the GOME data over North America, though there were significant regional discrepancies.

[4] *Abbot et al.* [2003] extended this analysis to show that the seasonal variation of the HCHO columns measured by GOME over North America during summer 1997 is broadly consistent with understanding of the seasonal cycle of isoprene emission, and that the interannual variability in the GOME data can be explained partly by the temperature dependence of isoprene emission. Recent validation of GOME HCHO data using aircraft observations over Tennessee and eastern Texas confirmed the dominance of biogenic VOCs as precursors of HCHO over the spatial scales sampled by GOME ($40 \times 320 \text{ km}^2$) [*Martin et al.*, 2004]. *Shim et al.* [2005] used GEOS-CHEM to conduct a global inversion of GOME HCHO column data from 1996 to 1997 to retrieve isoprene emissions from ten vegetation types and eight geographical regions. Over North America, GEOS-CHEM correlated well with GOME ($r = 0.84$) but required a 10% increase in annual isoprene emissions to minimize the bias relative to GOME, mainly due to increased emissions from temperate deciduous vegetation.

[5] The present work goes beyond the broad characterization of GOME HCHO data in previous studies [e.g., *Abbot et al.*, 2003] to explore the value of these data for testing and improving process-based emission models of isoprene. Our focus will be on North America and our reference will be the new generation Model of Emissions of Gases and Aerosols from Nature (MEGAN) process-based inventory [*Guenther et al.*, 2005]. This inventory incorporates the most recent knowledge about the functional dependence of isoprene emission on vegetation type, leaf age, temperature, and photosynthetic active radiation (PAR). Specific issues that we will address for quantitative interpretation of the GOME data in terms of isoprene emission include (1) the time-dependent HCHO yield from the oxidation of isoprene, (2) the potential role of other biogenic VOCs, such as monoterpenes and methylbutenol (MBO) to contribute toward HCHO column variability, and (3) the evaluation of the model-based relationship between HCHO column and isoprene emission using in situ observations. We will then exploit the GOME data to test the ability of MEGAN to reproduce

the geographical, seasonal, and interannual variability in isoprene emission.

2. Column Measurements of HCHO From GOME

2.1. Retrieval

[6] The GOME instrument was launched onboard the ERS-2 satellite in April 1995. It measures backscattered solar radiation (237–794 nm) in the nadir (center and two sideways scans) with a $40 \times 320 \text{ km}^2$ field of view. It is in a Sun-synchronous orbit with an equatorial local overpass time of 10:30, achieving global coverage within 3 days. Slant column abundances of HCHO are fitted in the 336–356 nm wavelength region with a mean column fitting uncertainty of $4 \times 10^{15} \text{ molec cm}^{-2}$ [*Chance et al.*, 2000]. These are converted to vertical HCHO columns using an air mass factor (AMF) formulation that accounts for the shape of the HCHO vertical profile and scattering processes from aerosols and clouds, in addition to Rayleigh scattering [*Palmer et al.*, 2001; *Martin et al.*, 2002]. Cloud fraction, height, and optical depth are retrieved from each GOME scene using the GOMECAT algorithm [*Kurosu et al.*, 1999]. Aerosol scattering is computed using monthly mean 3-D aerosol fields and optical properties from the Global Ozone Chemistry Aerosol Radiation and Transport (GOCART) model [*Chin et al.*, 2000, 2002; *Ginoux et al.*, 2001]. The shape of the HCHO vertical profile is from the GEOS-CHEM model (Appendix A), for individual GOME scenes. UV albedos are from a climatological database [*Koелеmeijer et al.*, 2003]. Typical AMFs over North America range 0.7–1 [*Palmer et al.*, 2001]. For the work shown here we use only data with an associated cloud fraction less than 40%. A more restrictive cloud filter does not affect the HCHO column statistics [*Palmer et al.*, 2001]. Figure 1 shows the HCHO slant columns for May–September 1996–2001 averaged over the $2^\circ \times 2.5^\circ$ GEOS-CHEM model grid. There is a clear seasonal cycle each year with values peaking in midsummer, similar to the seasonal cycle shown by *Abbot et al.* [2003] for 1997. Further discussion and evaluation of the seasonal and interannual variability observed by GOME data is presented in sections 5 and 6.

2.2. Correction of the Diffuser Plate Artifact

[7] The solar irradiance measurements used for spectral fitting are taken by GOME every three days or less, a period denoted as a solar day. The diffuser plate of the GOME instrument introduces an artifact in the solar irradiance measurement that results in a global bias in the retrieved columns varying from solar day to solar day [*Richter and Wagner*, 2001; *Richter et al.*, 2002]. *Palmer et al.* [2003] corrected this bias as the mean difference between observed versus GEOS-CHEM HCHO columns over the remote Pacific where columns are low and determined mainly by CH_4 oxidation [*Martin et al.*, 2002].

[8] Here, we improve the cleaning of the data set by accounting for the latitudinal and scan angle dependence of the diffuser plate artifact, and by better identifying and removing anomalous features. We identify “bad” solar days by computing the global mean slant HCHO column for each solar day and comparing it with the solar day means from

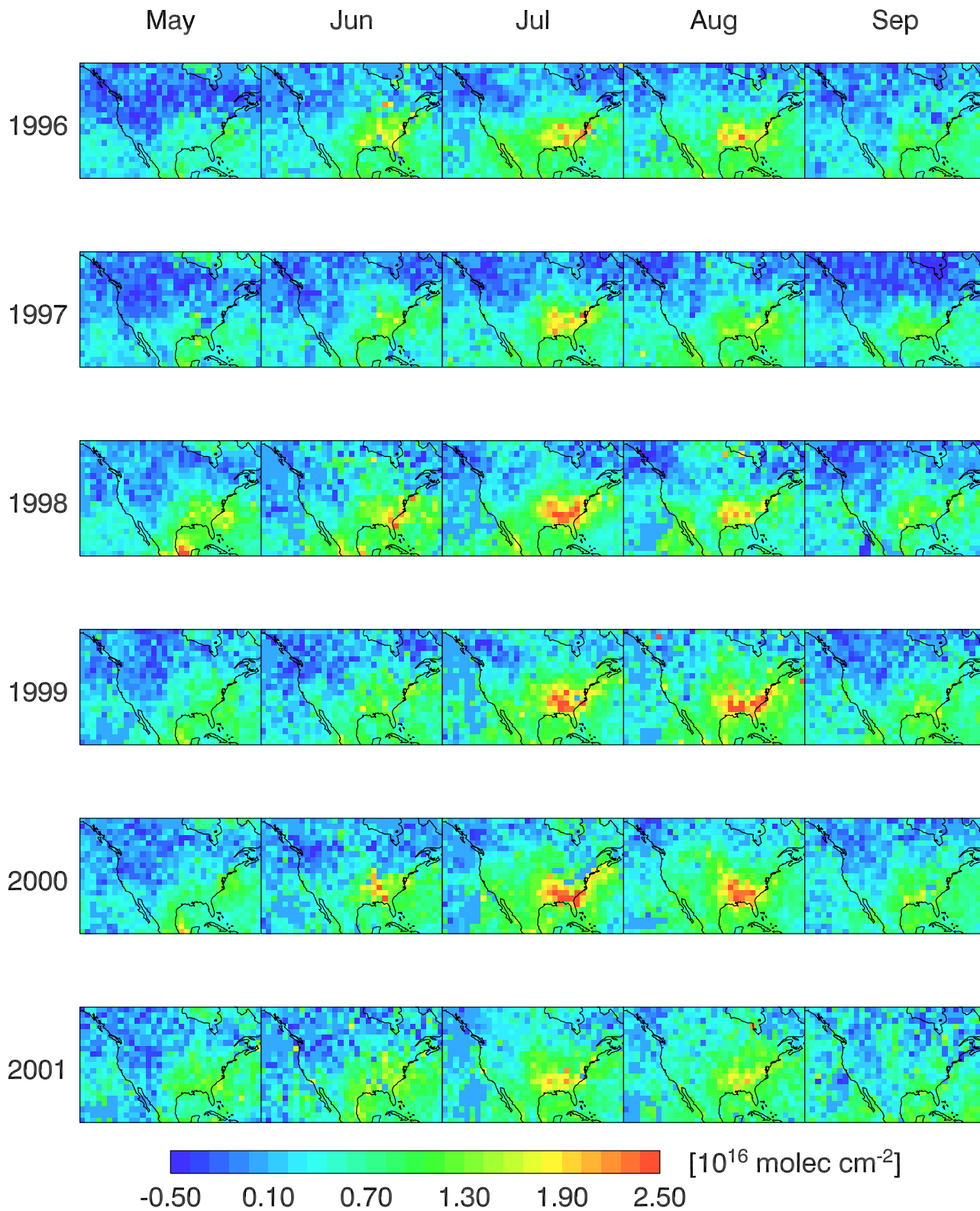


Figure 1. Monthly mean HCHO slant columns observed by GOME over North America for May–September 1996–2001. The data are for 1000–1200 LT, averaged on a $2^\circ \times 2.5^\circ$ grid and for cloud cover $\leq 40\%$. Each monthly mean grid point corresponds to an average of 20–30 GOME observations.

the rest of the month. Individual solar day means that are outside the mean ± 1 standard deviation for that month are removed from the analysis. These anomalous means correspond to consecutive orbits that include large positive or negative columns that are many times the value of reasonable column abundances. Solar days with poor data coverage over the Pacific because of clouds are also removed from further analysis.

[9] The monthly mean corrections of the diffuser plate artifact range from -1.7 (August) to 4.2 (July) $\times 10^{15}$ molec cm^{-2} , and are within the slant column fitting uncertainty [Chance *et al.*, 2000]. The data cleaning removes 30% of the fitted HCHO slant columns. The resulting monthly means for 1997 are within 20% of those shown by Abbot *et al.* [2003] but are less noisy.

2.3. Error Analysis

[10] Sources of error in the retrievals of vertical HCHO columns from GOME include (1) the slant column fitting, (2) the diffuser plate correction, and (3) the AMF calculation. Uncertainty in the slant column fitting is 4×10^{15} molec cm^{-2} [Chance *et al.*, 2000], which includes uncertainty in the HCHO absorption cross section. Uncertainty in the diffuser plate correction is likely much less. Sources of uncertainty in the AMF calculation include the UV albedo, the vertical distribution of HCHO, and clouds and aerosols. The precision of the UV albedo database is 0.02 [Koelemeijer *et al.*, 2003], corresponding to an AMF error of 8% [Palmer *et al.*, 2001]. Model error on the vertical distribution of HCHO introduces a 10% error on the AMF, based on comparison with aircraft observations over the southeast United States [Palmer *et al.*, 2003]. Martin *et al.* [2003] estimated a range of AMF errors of 20–30% due to clouds. Scattering aerosols mixed with HCHO in the boundary layer generally decrease the AMF [Palmer *et al.*, 2001], while absorbing aerosols have the opposite effect. The corresponding uncertainty in the AMF is less than 20% [Palmer *et al.*, 2001]. Overall we estimate an error on the AMF of about 30%.

[11] The errors associated with spectral fitting (4×10^{15} molec cm^{-2} on the slant column) and on the AMF (30%) are added in quadrature. For a typical scene over the eastern United States with a vertical column of 2×10^{16} molec cm^{-2} and an AMF of 0.7, the over uncertainty on the vertical column is 9×10^{15} molec cm^{-2} .

3. MEGAN Inventory for Isoprene Emission

[12] We use the new generation Model of Emissions of Gases and Aerosols from Nature (MEGAN) [Guenther *et al.*, 2005] as our best process-based emission inventory for comparison to the information from GOME. MEGAN is based on the earlier generation GEIA [Guenther *et al.*, 1995] and BEIS [Guenther *et al.*, 2000] inventories and includes extensive revisions to the base emissions factors and to the algorithms that describe the sensitivity to environmental factors. These revisions draw on recent field and greenhouse observations, and improvements to satellite and in situ land cover inventories.

[13] Isoprene emission E in MEGAN is described as

$$E = E_0 \gamma_{LAI} \gamma_T \gamma_A \gamma_{PAR}, \quad (1)$$

where E_0 refers to the base emission factor for standard conditions (leaf area index (LAI) = 5, surface air $T = 303$ K, above canopy PAR = $1500 \mu\text{mol m}^{-2} \text{s}^{-1}$). The gamma factors denote corrections to these standard conditions reflecting the LAI (γ_{LAI}), leaf temperature (γ_T), leaf age (γ_A), and PAR (γ_{PAR}). Details on γ_{LAI} , γ_A , and γ_{PAR} are given by Guenther *et al.* [2005]. We elaborate here on γ_T because it represents the principal source of day-to-day variability in the MEGAN inventory in summer. It is a function of both the current temperature and the mean local temperature for the past 15 days [Guenther *et al.*, 1999]:

$$\gamma_T = \frac{E_{opt} C_{T_2} \exp(C_{T_1} x)}{C_{T_2} - C_{T_1} (1 - \exp(C_{T_2} x))}, \quad (2)$$

where $x = (T_{opt}^{-1} - T^{-1})/R$, T is the surface air temperature (K), R is the gas constant, E_{opt} is the maximum value for γ_T , T_{opt} is the temperature at which $\gamma_T = E_{opt}$, and $C_{T_1} = 76$ and $C_{T_2} = 160$ are empirical coefficients (units of $\ell^{-1} \text{MPa}^{-1}$ mol) representing the energy of activation and deactivation of emissions, respectively [Guenther *et al.*, 2005]. These, and subsequent, coefficients take into account the variation of isoprene emission with surface temperature. This functional dependence exponentially increases isoprene emission with increasing surface air temperature up to a maximum at T_{opt} followed by a rapid decline. Values of E_{opt} and T_{opt} are given by

$$E_{opt} = 1.9 \exp(0.125(T_{15} - 301)) \quad (3)$$

$$T_{opt} = 316 + 0.5(T_{15} - 301) \quad (4)$$

where T_{15} is the mean 24-hour average surface air temperature (K) of the past 15 days.

[14] We drive MEGAN in GEOS-CHEM using assimilated surface air temperature and PAR (direct and diffuse) observations from the Global Modeling and Assimilation Office (GMAO) at NASA Goddard, and monthly mean LAI values for 2001 derived from the AVHRR satellite instrument [Buermann *et al.*, 2002] and mapped on the $2 \times 2.5^\circ$ model grid. Annual isoprene emissions over North America from MEGAN are 10% lower than from GEIA. In section 4 we also examine the potential contributions of monoterpenes and methylbutenol (MBO) to HCHO column observed by GOME. We use the GEIA inventory for monoterpenes [Guenther *et al.*, 1995], and model MBO emissions following Guenther *et al.* [2000]. The sum of α - and β -pinenes accounts for 75% of total annual monoterpene emissions in North America [Guenther *et al.*, 2000].

[15] Figure 2 shows the resulting seasonal course of isoprene, monoterpenes, and MBO emissions for the 2001 growing season, sampled at the GOME overpass time of 1000–1200 local time (LT). Emissions are maximum in July and August. Isoprene is emitted mainly from broadleaf trees, the most efficient including poplar, sweetgum, aspen, and oak. These tree types are mostly located in eastern North America with the highest density in the southeastern United States. Monoterpenes are primarily emitted by coniferous trees including pine, cedar, and redwood. These have the highest density in the northern United States and central Canada. MBO emissions are limited to selected conifer forests [Guenther *et al.*, 2000]. On the continental

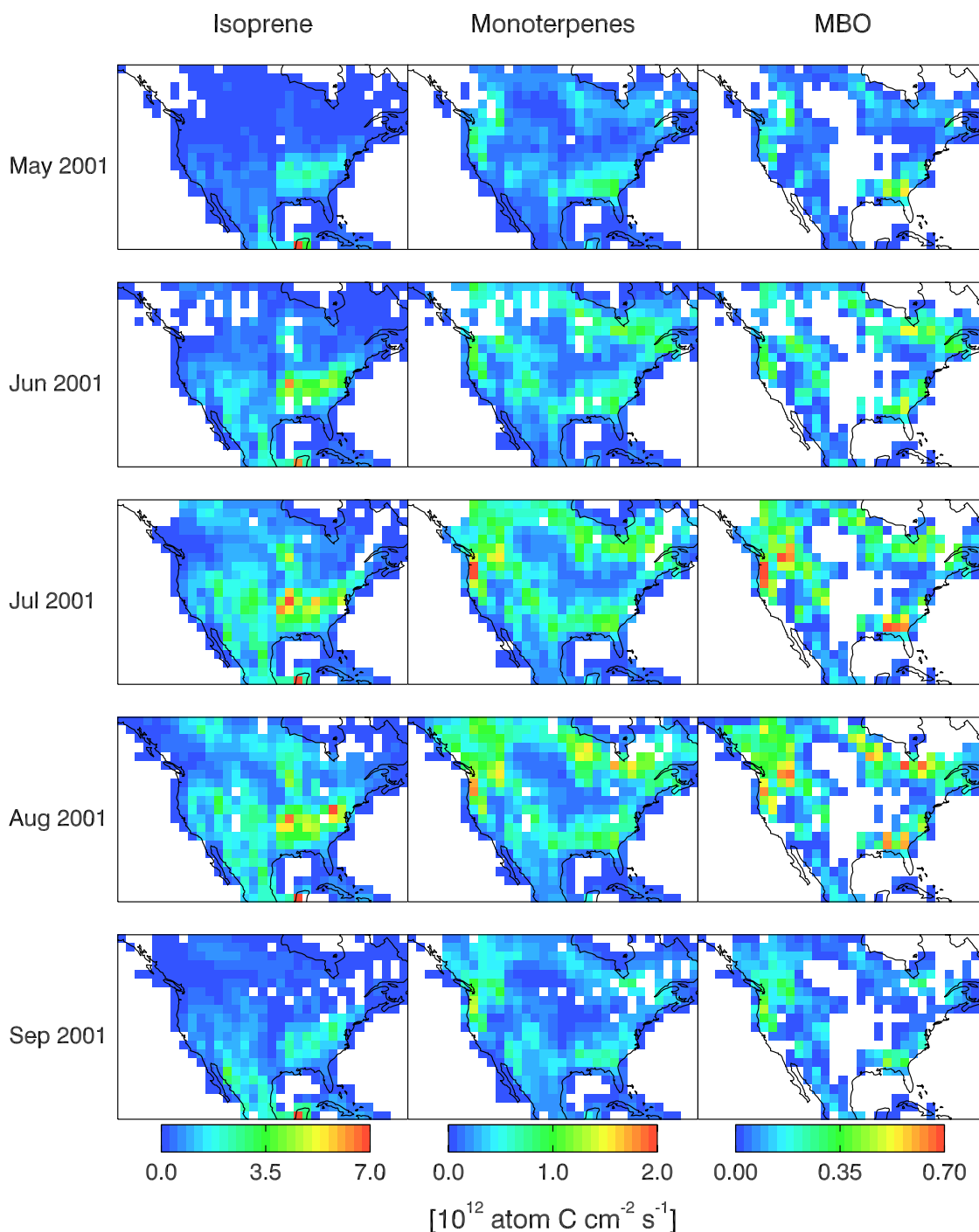


Figure 2. Monthly mean biogenic emissions as would be observed by GOME (1000–1200 LT) over North America. Isoprene emission estimates are from the MEGAN inventory, and monoterpenes and methylbutenol (MBO) emission estimates are from the GEIA and *Guenther et al.* [2000] inventories, respectively. White areas have no emissions. Note the differences in scales depending on species.

scale, isoprene emissions are about 3 times larger than monoterpenes and considerably higher than MBO.

4. Relating Observed HCHO Columns to VOC Emissions

[16] *Palmer et al.* [2003] previously described the theory for relating HCHO columns to reactive VOC emissions. In the absence of horizontal transport, the HCHO column Ω at

steady state is linearly related to the sum of underlying VOC emissions E_i scaled by their HCHO yields Y_i

$$\Omega = \frac{1}{k_{\text{HCHO}}} \sum_i Y_i E_i, \quad (5)$$

where k_{HCHO} is the loss rate constant for HCHO (reaction with OH, photolysis) as applied to Ω ; reaction with O_3 and

NO_3 represent minor HCHO losses during the day when GOME passes overhead. Horizontal transport smears this local relationship spatially to a degree that depends on the wind speed and the time lag between VOC emission and HCHO production. For isoprene the time lag is only a few hours, at least under high NO_x conditions (1 ppb), corresponding to a smearing length typically less than 100 km, of the same order as the GOME field of view ($40 \times 320 \text{ km}^2$). Formaldehyde columns in GEOS-CHEM at $2 \times 2.5^\circ$ resolution of the order of $200 \times 250 \text{ km}^2$ show indeed a strong correlation with local isoprene emission [Palmer *et al.*, 2003], consistent with the view that isoprene is the dominant driver of HCHO column variability and that the associated smearing is negligible.

[17] Palmer *et al.* [2003] used the GEOS-CHEM local relationship between isoprene emission and HCHO column, derived for North American quadrants, as a linear transfer function to infer local isoprene emissions from the GOME HCHO columns:

$$\Omega = SE_{\text{isop}} + B, \quad (6)$$

where S denotes the linear slope, E_{isop} is the local isoprene emissions and B denotes a background HCHO determined by the oxidation of other, generally, longer-lived VOCs. The slope S depends on the model yield of HCHO from isoprene oxidation and the loss rate constant for column HCHO (equation (5)). The GEOS-CHEM chemical mechanism includes a relatively detailed treatment of isoprene oxidation chemistry, but there is still extensive lumping of oxidation intermediates [Horowitz *et al.*, 1998]. We use here the fully explicit Master Chemical Mechanism (version 3.1, <http://mcm.leeds.ac.uk/MCM/>) [Saunders *et al.*, 2003; Jenkin *et al.*, 2003], incorporating the latest information on VOC oxidation mechanisms, to evaluate the isoprene oxidation mechanism used in GEOS-CHEM. We also apply the MCM to calculate the time-dependent HCHO yields from α - and β -pinenes and MBO (not included in previous GEOS-CHEM simulations) to assess their potential contributions to observed HCHO columns.

4.1. Time-Dependent HCHO Yields From Biogenic VOCs

[18] We present here MCM calculations of HCHO yields from the oxidation of isoprene, α - and β -pinenes, and MBO. These calculations are conducted in a box model (0-D) time-dependent simulation over a succession of diurnal cycles. The model is initialized at 9 LT for midlatitude summertime conditions with 1 ppb of the VOC studied, 40 ppb O_3 , 100 ppb CO, and either 0.1 or 1 ppb of NO_x , which are assumed to represent low and high NO_x regimes, respectively. The VOC is allowed to decay while O_3 , CO and NO_x are held at their initial concentrations (following Zimmerman *et al.* [1978]). We show only results from the first two days. In practice only HCHO produced from the parent VOC within the first day can be related to the local VOC emission over the scale viewed by GOME.

4.1.1. Isoprene

[19] Isoprene (C_5H_8) is oxidized by the OH radical on a timescale of less than 1 hour during daytime, producing organic peroxy radicals (RO_2). Under high NO_x conditions these RO_2 radicals react with NO, producing HCHO to-

gether with methyl vinyl ketone (MVK) and methacrolein (MACR) as first-generation products [Sprengnether *et al.*, 2002]. Subsequent oxidation by OH of MVK and MACR produces additional HCHO on a timescale of a few hours. The MCM estimates that 96% of the ultimate HCHO yield (0.50 C^{-1}) from the oxidation of isoprene under high- NO_x condition is produced on the first day (Figure 3a and Table 1). Results from the GEOS-CHEM mechanism [Palmer *et al.*, 2003], also shown in Figure 3a for comparison, indicate an ultimate HCHO yield of 0.43 C^{-1} with 90% of that yield reached within the first day.

[20] Under low NO_x conditions the production of HCHO is slower, as RO_2 radicals react with HO_2 to form organic peroxides that act as temporary reservoirs. The ensuing chemistry is not well understood but there is evidence from laboratory and field observations [Thornton *et al.*, 2002; Hasson *et al.*, 2004] that the organic peroxides are not terminal carbon sinks but generate RO_2 and RO radicals by reaction with OH and photolysis on a timescale of a day. The MCM simulation with 0.1 ppb NO_x shows an ultimate HCHO yield of 0.47 C^{-1} , with 68% of that yield reached on the first day. The GEOS-CHEM chemical mechanism shows a lower ultimate yield under these low- NO_x conditions (0.28 C^{-1}) due to loss of carbon in the lumped products of organic peroxide reactions; similarly to the MCM, 66% of the ultimate yield is reached on the first day.

[21] Although the MCM mechanism is certainly more accurate than the GEOS-CHEM mechanism, there remains significant uncertainty. The 20–40% discrepancy in the time-dependent HCHO yields calculated by GEOS-CHEM and MCM provides an estimate for the related error in isoprene emission estimates from GOME observations via the model regression (equation (6)).

4.1.2. The α - and β -pinenes and MBO

[22] Figures 3b–3d show the MCM-computed HCHO yields for α - and β -pinene and MBO. The main sinks of these VOCs are reaction with OH and O_3 , resulting in a lifetime of a few hours. Under high NO_x conditions, approximately 60% of the ultimate yield (0.3 C^{-1}) is reached by the end of day 1, and under low- NO_x conditions 35–50% of the ultimate yield (0.2 C^{-1}) is realized for the same time period. Initial oxidation products for the pinenes include pinonaldehyde (α -pinene), nopinone (β -pinene), HCHO, and acetone. Initial oxidation products for MBO include HCHO, 2-hydroxy-2-methylpropanol, acetone, and glycolaldehyde. Long-lived intermediates such as acetone delay HCHO production, smearing the relationship of HCHO column to local VOC emissions.

[23] We see from Table 1 that the 1-day HCHO yields from oxidation of pinenes and MBO are only about one third those of isoprene. To determine the potential contribution of pinenes and MBO to HCHO columns in the GEOS-CHEM model, we parameterize their chemical decay to yield HCHO by fitting an exponential curve to the MCM results (Figure 3, high- NO_x regime). The fitted curve has an e-folding lifetime of 1.33 days and an ultimate HCHO yield of 0.3 C^{-1} . Using the high- NO_x regime provides an upper limit of the contribution of pinenes to HCHO production. The resulting contribution to the model HCHO column over North America is small (not shown), typically less than the slant column fitting uncertainty. We conclude that mono-

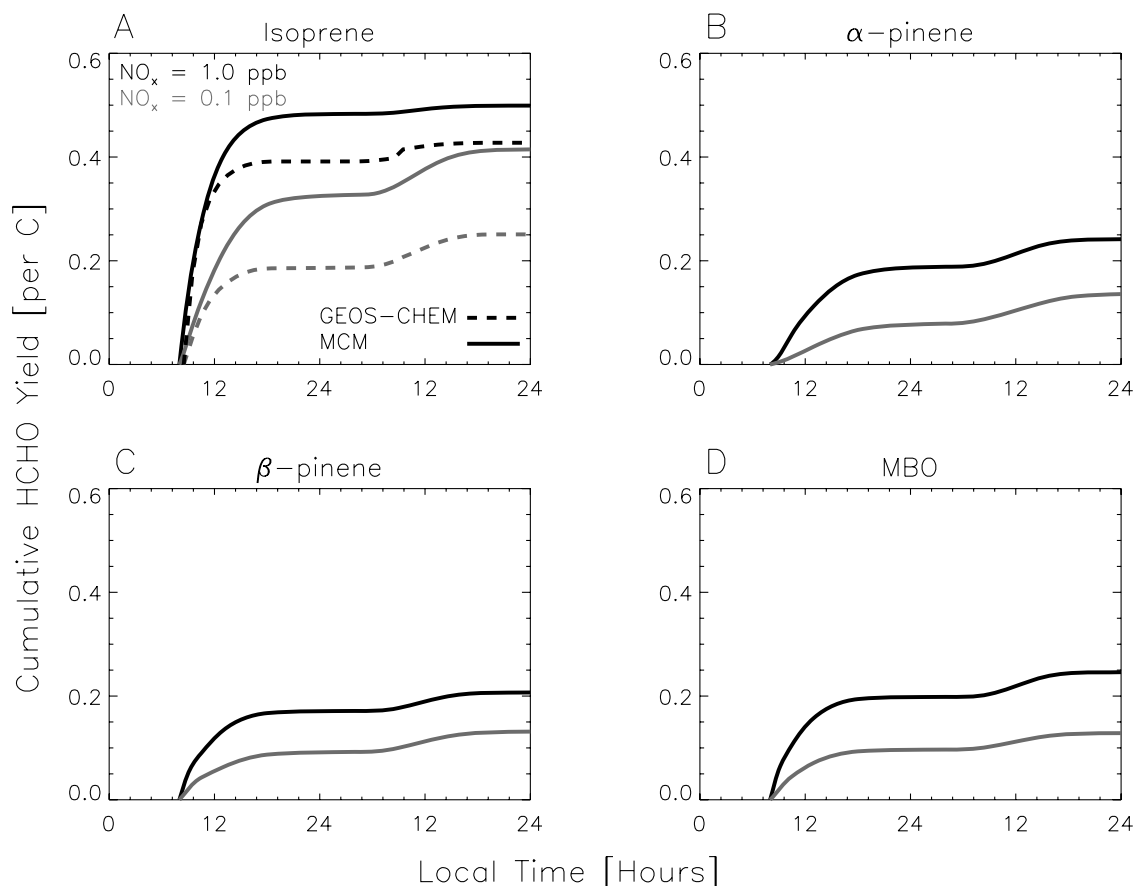


Figure 3. Time-dependent HCHO yields per carbon from the oxidation of isoprene, α - and β -pinenes, and methylbutenol (MBO). Values are computed using the Master Chemical Mechanism (version 3.1, <http://mcm.leeds.ac.uk/MCM/>) under high NO_x (1 ppb) and low NO_x (0.1 ppb) conditions. The calculations are initialized at 9 local time for midlatitude summertime conditions with 1 ppb of the VOC studied, 40 ppb O_3 , 100 ppb CO , and either 0.1 or 1 ppb NO_x , as described by Palmer *et al.* [2003]. The VOC is allowed to decay, while O_3 , CO , and NO_x are held at their initial values. Also shown are the time-dependent HCHO yields from the oxidation of isoprene computed by the GEOS-CHEM chemical mechanism [Palmer *et al.*, 2003].

terpenes and MBO make little contribution to the HCHO column variability over North America seen by GOME.

4.2. Model Regressions Between Isoprene Emissions and HCHO Columns

[24] Palmer *et al.* [2003] used the GEOS-CHEM slopes of the local isoprene emission versus HCHO column linear regression (equation (6)), computed for July 1996 in North American quadrants separated at (40°N , 110°W), to infer isoprene emissions from the GOME data. Here we examine the seasonal variation in that slope during the 2001 growing season as necessary to quantify seasonal variation in the isoprene emissions from the GOME data, and we also evaluate that model slope with field observations.

[25] Figure 4 shows the slopes S computed using the GEOS-CHEM chemical mechanism for individual months during the 2001 growing season in the four North American quadrants. The correlation coefficients associated with these slopes are typically greater than 0.7. Here and elsewhere, we use the reduced major axis method of linear regression, allowing for error in both correlated variables [Hirsch and

Gilroy, 1984]. The slopes are 50% lower in summer (June–August) than in the shoulder seasons (May, September), and are lower in the south than in the north, reflecting the photochemical lifetime of HCHO and the seasonal variation in column O_3 . The seasonal variation of isoprene emission is therefore amplified in the HCHO column observations.

Table 1. HCHO Yields per Carbon From the Oxidation of Isoprene, α - and β -pinenes, and MBO^a

Species	Yield, Day 1 ^b		Yield, Day 5 ^b	
	1 ppb NO_x	0.1 ppb NO_x	1 ppb NO_x	0.1 ppb NO_x
Isoprene	0.48 (0.39)	0.32 (0.19)	0.50 (0.43)	0.47 (0.29)
α -pinene	0.19	0.08	0.31	0.23
β -pinene	0.17	0.09	0.27	0.18
MBO	0.20	0.10	0.35	0.21

^aHCHO yields are calculated using the Master Chemical Mechanism (version 3.1) [Saunders *et al.*, 2003; Jenkin *et al.*, 2003], as discussed in section 4. Numbers in parentheses refer to HCHO yields computed using the GEOS-CHEM chemical mechanism [Palmer *et al.*, 2003].

^bThe HCHO yield at day 1 is the yield at midnight of that day, and the yield at end of day 5 is taken in the text to be the ultimate yield.

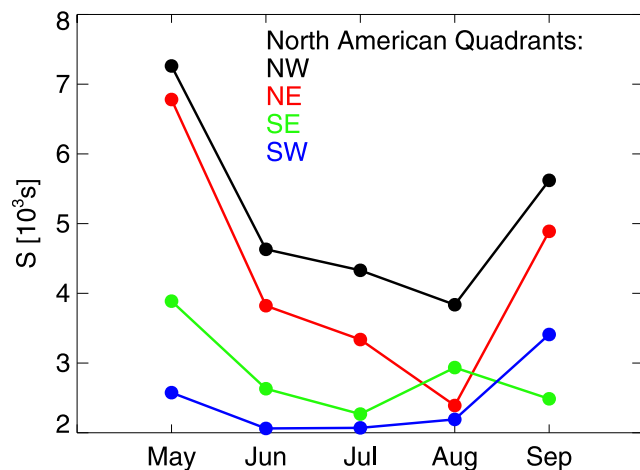


Figure 4. Slopes S of the linear regression of the HCHO column versus isoprene emission (equation (6)) computed in the GEOS-CHEM model at 1000–1200 LT along the GOME orbit tracks and for cloud cover less than 40% and for individual months. Values are computed for individual North American quadrants with latitudinal and longitudinal divides at 40°N and 110°W . Slopes are calculated using reduced major axis linear regression [Hirsch and Gilroy, 1984].

The isoprene lifetime in the shoulder seasons is still short enough that the correlations of HCHO and isoprene emissions remain strong.

[26] Palmer *et al.* [2003] interpreted the intercept of the isoprene:HCHO column regression as the background HCHO column due to long-lived VOCs (e.g., CH_4). The mean intercept value is $4.8 \times 10^{15} \text{ molec cm}^{-2}$, with largest values during mid-growing season in all quadrants. This seasonal variation likely represents an integrated background from the oxidation of VOCs with lifetimes too long for GOME to distinguish them individually.

[27] Concurrent observations of isoprene flux and HCHO concentration were made on 12 days during 11 July 11 to 20 August 1998 at the PROPHET mixed forest site located in northern Michigan ($42^{\circ}30'\text{N}$, $84^{\circ}42'\text{W}$; elevation 238 m) [Sumner *et al.*, 2001; Pressley *et al.*, 2005]. We sample these observations between 1000 and 1200 LT, coinciding with the GOME overpass. Isoprene fluxes were measured by eddy correlation and range from 0.4 to $8.2 \times 10^{12} \text{ molec cm}^{-2} \text{ s}^{-1}$ over the 12-day period, with a mean value of $4.2 \times 10^{12} \text{ molec cm}^{-2} \text{ s}^{-1}$. We calculate HCHO columns from the observed surface concentrations by assuming an idealized exponentially decaying vertical profile of number density, with a scale height of 1 km based on aircraft observations of HCHO over the southeast United States [Fiore *et al.*, 2002]. Using these assumptions, the measured HCHO surface concentrations (2–9 ppb) correspond to column abundances of 0.6 – $2.4 \times 10^{16} \text{ molec cm}^{-2}$. The resulting slope (Figure 5) is $2.1 \times 10^3 \text{ s}$, which is 30% smaller than the mean GEOS-CHEM model slope for the Northeast in July–August 2001. The 30% discrepancy between model and observed slopes should be regarded as consistent within the uncertainty in the analysis, e.g., taking into account uncertainties associated with the model oxida-

tion mechanism and mixing depths. The lower slope in the PROPHET data could reflect a significant fetch over the Great Lakes.

5. Seasonal Variation of GOME Isoprene Emission: Comparison With in Situ Observations and MEGAN

5.1. Local Comparison at the PROPHET Site

[28] Isoprene flux measurements by Pressley *et al.* [2005] at the PROPHET site over the length of the 2001 growing season offer an opportunity to evaluate the isoprene emissions inferred from GOME. The measurements were made by eddy correlation with a mean uncertainty less than 40% [Pressley *et al.*, 2005]. We sample these data at 1000–1200 LT, corresponding to the overpass time of the GOME satellite instrument. Figure 6 shows the seasonal time series of isoprene flux measurements, featuring an increase from leaf-out to early August followed by a sharp decline, with large day-to-day variability superimposed. MEGAN fluxes are within a factor of 2 of measurements ($r = 0.55$, bias = $-3 \times 10^{12} \text{ atom C cm}^{-2} \text{ s}^{-1}$). Isoprene emissions estimated from GOME track well the seasonal course of isoprene flux but have more difficulty with day-to-day variability ($r = 0.30$, bias = $1.3 \times 10^{12} \text{ atom C cm}^{-2} \text{ s}^{-1}$).

5.2. Seasonal Variability on the Continental Scale

[29] Monthly mean isoprene emissions calculated from GOME HCHO columns for the 2001 growing season over North America are shown in Figure 7 and compared to the corresponding MEGAN model values. There is strong coherence in the continental-scale seasonal variations with

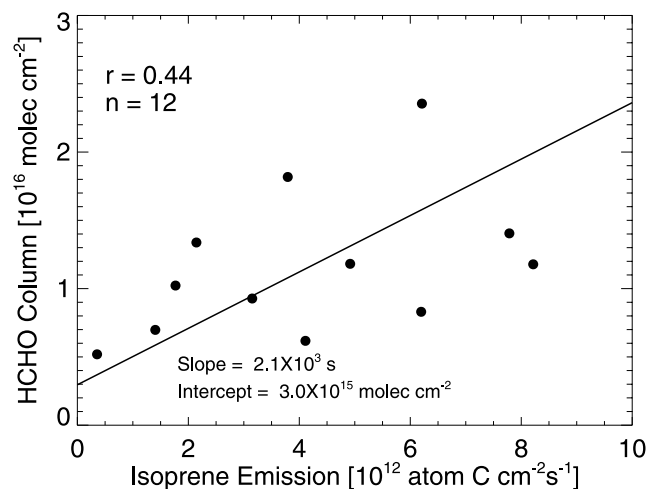


Figure 5. Relationship between HCHO and isoprene emission measured at the PROPHET forest site in northern Michigan ($42^{\circ}30'\text{N}$, $84^{\circ}42'\text{W}$; elevation 238 m) for 12 days from 11 July to 20 August 1998 at 1000–1200 LT, as viewed by GOME. HCHO columns are calculated from the measured surface HCHO concentrations [Sumner *et al.*, 2001] by assuming an exponentially decaying vertical profile of mixing ratio with a 1 km scale height. The Pearson correlation r , the number of points used to compute r , and the slope and intercept of the reduced major axis linear regression [Hirsch and Gilroy, 1984] are shown inset.

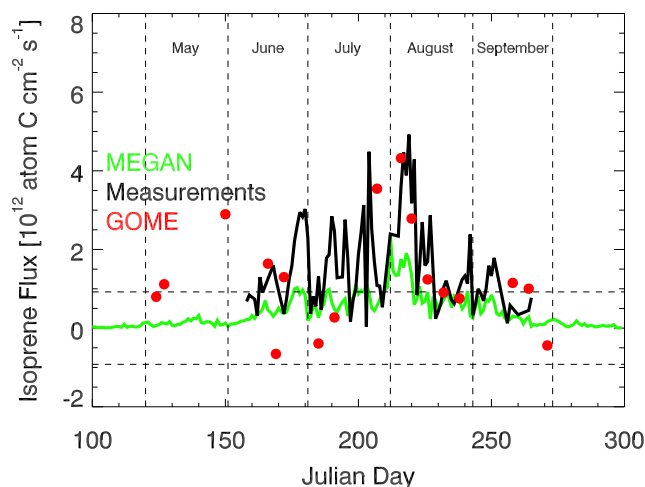


Figure 6. Isoprene fluxes at the PROPHET forest site, Michigan, as viewed by GOME (1000–1200 LT) during the 2001 growing season. Green and black lines denote MEGAN and measured isoprene fluxes, respectively. Red circles denote isoprene fluxes retrieved from GOME HCHO columns. Horizontal dashed lines denote uncertainty in the retrieved HCHO vertical columns (section 2).

values peaking in July–August when temperatures are highest. GOME is higher than MEGAN by 10–20% in early summer and lower by 30% than MEGAN in late summer. Palmer *et al.* [2003] previously found that GOME was 20% lower than GEIA isoprene emissions over North America during July 1996. This is consistent with differences between the GEIA and MEGAN inventories [Guenther *et al.*, 2005]. Both MEGAN and GOME place the largest isoprene emissions over the southeastern US. MEGAN and GOME show a hot spot over the Ozarks oak forest in Missouri [Wiedinmyer *et al.*, 2005]. GOME also shows large emission further east that are not evident in MEGAN.

[30] Abbot *et al.* [2003] showed a similar seasonal variation for HCHO columns in 1997 but during that year HCHO remained high in September before declining rapidly in October. This is in part due to neglecting the time-dependent slope S , which effectively reduces emissions during the shoulder months (Figure 4). As we show later other differences between 1997 and 2001 are an example of the large observed interannual variability in the seasonal cycle.

6. Interannual Variability of GOME Isoprene Emissions

[31] We examine interannual variability in isoprene emission over the 1996–2001 period using the GOME slant HCHO columns (Figure 1). We use monthly mean AMF fields from 2001 (Figure 7) to convert observed slant columns to vertical columns, and the monthly isoprene emission:HCHO column slopes (Figure 4) to convert the vertical columns to isoprene emissions. The interannual variation in AMF is likely to be much less than the seasonal variation (8%). Interannual variation in the isoprene emission:HCHO column slopes (Figure 4) is

also likely to be much smaller than the seasonal variation. Monthly mean vertical HCHO columns during 2001 calculated using monthly mean AMFs are within a few percent of those calculated using scene-specific AMFs (Figure 7).

[32] Figure 8 shows the isoprene emission calculated from the GOME slant column data (Figure 1). Isoprene emissions during summer 2001 are among the lowest in the 6-year period; the largest are for 1998–2000. For all years the GOME isoprene emissions over North America are largest in June–August, with values approaching noise levels outside this time period [Abbot *et al.*, 2003]. Here, we estimate the monthly mean interannual variability as the one standard deviation about the 6-year monthly means. The percentage interannual variability of isoprene emissions for June, July, and August over 1996–2001 are 27%, 22%, and 35%, respectively.

[33] To further explore this interannual variability we focus on the southeast United States (32° – 38° N, 80° – 95° W), where the HCHO columns are largest and the interannual variability is clearest. Mean seasonal variations of slant HCHO columns for this region are shown in Figure 9. Values for a particular year can depart from the 1996–2001 mean (black line) by more than 40% for a particular month. The start of isoprene emissions over the southeastern United States is typically during mid to late May. The timing of the seasonal maximum varies from year to year, although it is always in July–August. All years show a rapid decline in September and a shutdown of isoprene emissions by the end of that month.

[34] Figure 10 correlates the monthly mean GOME-derived isoprene emissions for 1996–2001 over the southeastern United States with the corresponding monthly mean surface air temperature to investigate the extent to which temperature drives the variability observed by GOME. We use National Centers for Environmental Prediction (NCEP) surface air temperature because GMAO does not provide a consistent continuous data set over those six years. We find that the MEGAN dependence of isoprene emission on surface air temperature (equation (2)) explains more than 75% of the observed variance in the GOME-derived isoprene emissions when we use NCEP monthly mean temperatures to represent both the instantaneous temperature, T , and the mean 15-day temperature, T_{15} ; acknowledging that equation (2) was designed primarily to simulate isoprene fluxes using surface air temperature on shorter timescales. Accounting for T_{15} generally decreases emissions at temperatures below 298 K and introduces a stronger emission dependence on temperature above 295 K with the effect of increasing emissions above 298 K.

[35] Fitting the activation and deactivation energy values (C_{T_1} and C_{T_2}) in equation (2) determines the rate at which isoprene emission responds to temperature. These are empirical coefficients with values of 76 and 160 (ℓ^{-1} MPa $^{-1}$ mol), respectively [Guenther *et al.*, 2005]. We fit these coefficients to the ensemble of summertime GOME data. Fitted values of C_{T_1} and C_{T_2} with and without T_{15} are 125 and 156, and 119 and 141 (ℓ^{-1} MPa $^{-1}$ mol), respectively. These fitted values do not improve significantly the correlation ($r = 0.87$) between the GOME-

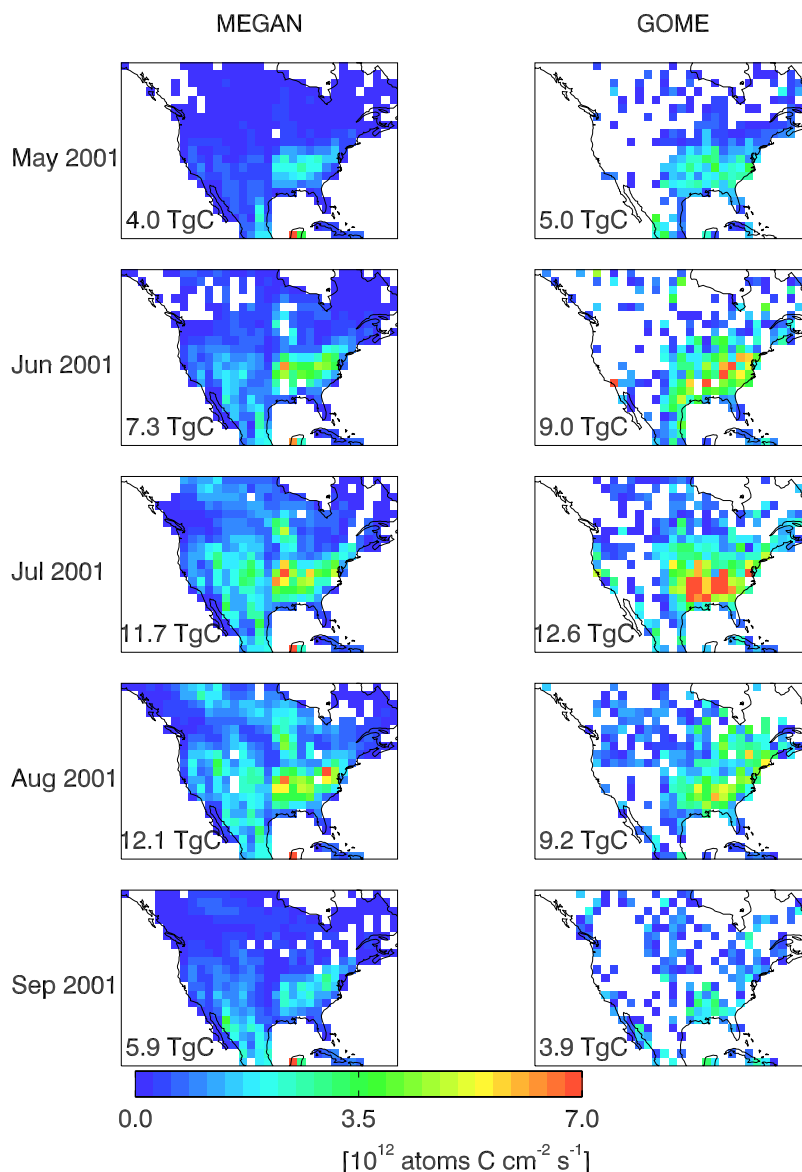


Figure 7. Monthly mean isoprene emissions (10^{12} atom C cm^{-2} s^{-1}) over North America at 1000–1200 LT for May–September 2001 with cloud cover $\leq 40\%$. (left) MEGAN and (right) GOME isoprene emissions are averaged over the $2^\circ \times 2.5^\circ$ GEOS-CHEM grid. North American monthly totals are shown inset.

derived isoprene emissions and those predicted by equation (2).

7. Summary and Discussion

[36] We analyzed a 6-year (1996–2001) record of HCHO column observations from the GOME satellite instrument, and examined the value of these data as top-down constraints on biogenic VOC emissions. We estimate a 40% error on the HCHO column retrieval, after removal of a diffuser plate artifact. Clouds are the most important source of error. The resolution of GOME is 40×320 km^2 , so that cloud contamination is ubiquitous. Higher spatial resolution data (13×24 km^2) available from the recently launched Ozone Monitoring Instrument (OMI) aboard the Aura satellite (July 2004)

should enable significant reduction of the cloud error by excluding cloudy scenes.

[37] We find that the main source of HCHO observed by GOME over North America is the oxidation of isoprene. Isoprene forms HCHO promptly and with high yield. The yield in our GEOS-CHEM CTM mechanism, used to convert GOME HCHO columns to isoprene emission, is 20–30% lower than in the detailed Master Chemical Mechanism (MCM). Conversely, analysis of in situ isoprene flux and HCHO concentration measurements at the PROPHET site in northern Michigan suggests a HCHO yield 30% lower than simulated in GEOS-CHEM. We therefore estimate a 30% uncertainty in the GEOS-CHEM-derived relationship between HCHO columns and isoprene emissions. Comparison of the GOME-derived isoprene emissions with in situ flux measurements at the PROPHET site for the

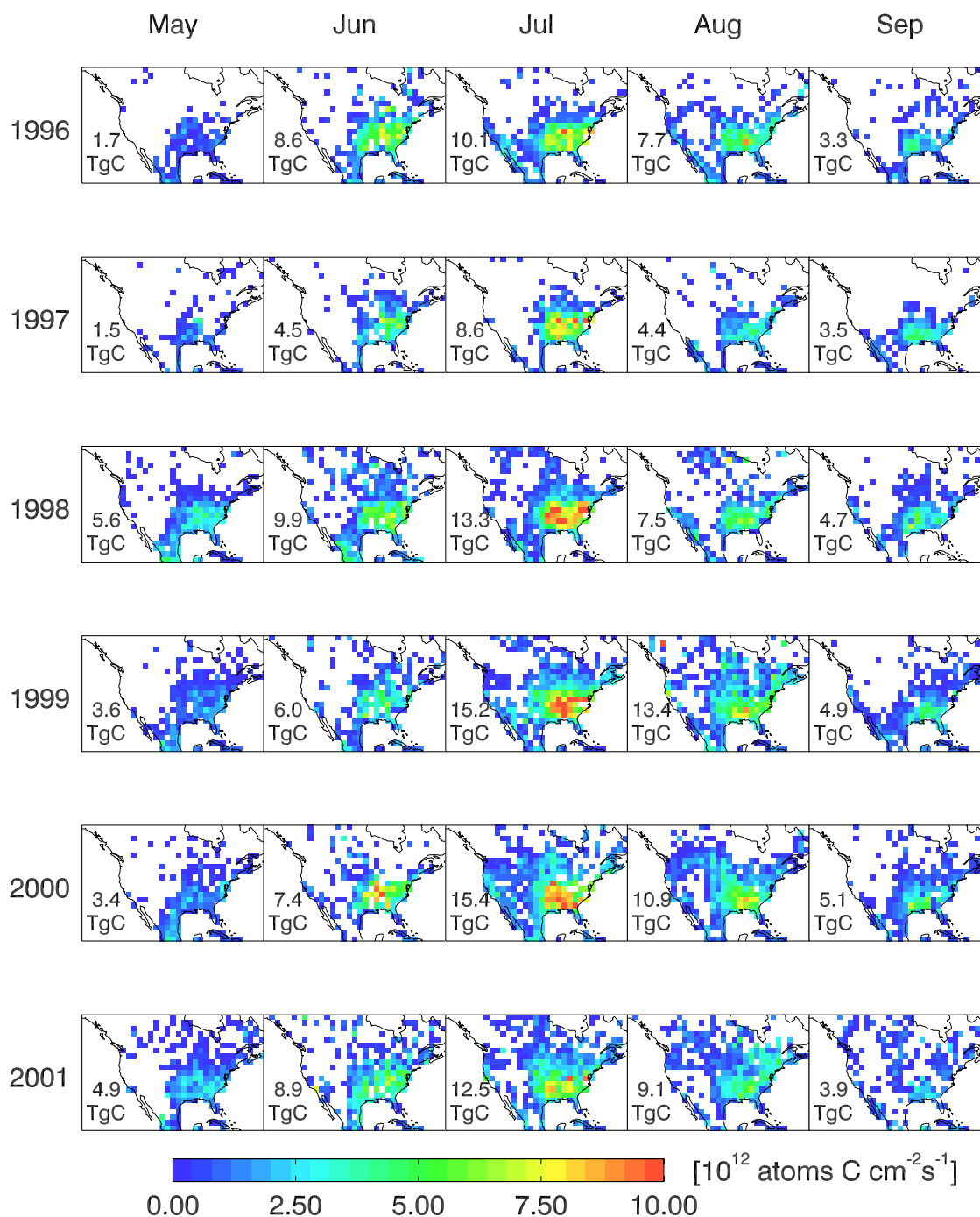


Figure 8. Monthly mean isoprene emissions ($10^{12} \text{ atom C cm}^{-2} \text{ s}^{-1}$), as calculated from GOME HCHO slant column data, over North America for May–September 1996–2001. The data are for 1000–1200 LT, averaged on a $2^\circ \times 2.5^\circ$ grid and for cloud cover $\leq 40\%$. North American monthly totals are shown inset. White areas have no emissions.

length of the 2001 growing season shows good agreement in the seasonal variation of emissions, but poor correlation on a day-to-day basis ($r = 0.3$).

[38] There is a high degree of consistency in continental-scale and seasonal variations of North American isoprene emissions during 2001 derived from GOME and those from the MEGAN bottom-up inventory [Guenther *et al.*, 2005]. GOME is higher than MEGAN by 20–30% in midsummer and lower by 10% in the shoulder seasons. Both GOME and

MEGAN show highest emissions in the southeastern United States, but MEGAN has a maximum in the Ozarks while the GOME maximum is farther east.

[39] Examination of the 6-year HCHO column record from GOME indicates general reproducibility of seasonal and continental-scale patterns from year to year, and consistency in the seasonal onset and shutoff of isoprene emission. Generally, HCHO columns increase in late May, peak in July or August, depending on the year, and decrease

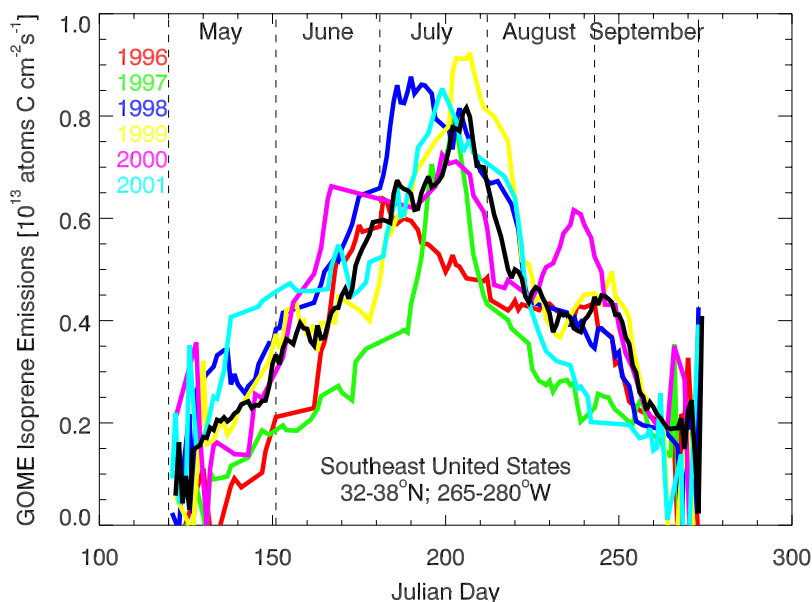


Figure 9. Seasonal variation of isoprene emissions (10^{12} atom $\text{C cm}^{-2} \text{s}^{-1}$), as calculated from GOME HCHO column data, over the southeastern United States (32° – 38°N , 80° – 95°W) during the 1996–2001 growing seasons (May–September). The data have been smoothed with a 10-day running mean. The black line denotes the mean seasonal variation for the 6-year period, and the colored lines show individual years.

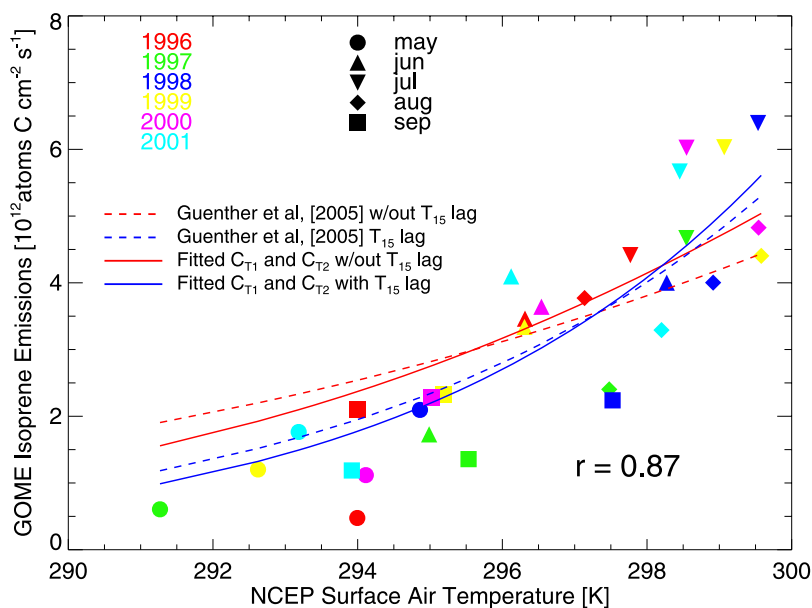


Figure 10. Scatterplot of isoprene emissions (10^{12} atom $\text{C cm}^{-2} \text{s}^{-1}$), as calculated from GOME HCHO slant column data, versus NCEP surface air temperature (K) over the southeastern United States (32° – 38°N , 80° – 95°W) during May–September 1996–2001. The Pearson correlation coefficient, r , is shown inset. The lines are fits of the MEGAN relationship between surface temperature and isoprene emission $\gamma_T(C_{T_1}, C_{T_2})$ [Guenther *et al.*, 2005] (equation (2)), where γ_T describes isoprene emission as a function of temperature and $C_{T_1} = 76$ and $C_{T_2} = 160$ represent activation and deactivation energies that determine the rate at which isoprene changes as a function of temperature. Red lines account only for the dependence of γ_T on instantaneous temperature, while blue lines also take into account the dependence on temperatures from the past 15 days T_{15} [Petron *et al.*, 2001] (section 3). Dashed lines represent emissions predicted by the empirical model [Guenther *et al.*, 2005], while solid lines represent a simultaneous fit of C_{T_1} and C_{T_2} to the GOME data.

rapidly in September. There is significant interannual variation in the seasonal and continental-scale patterns. Examination of the interannual variation in the southeastern United States shows that it is strongly correlated with surface air temperature in a manner consistent with the temperature dependence of isoprene emission in the MEGAN inventory ($r = 0.87$).

[40] Our analysis therefore demonstrates that HCHO columns observed from space provide valuable top-down constraints on isoprene emission inventories. Data from OMI should provide better data than GOME by virtue of its global daily coverage and higher horizontal resolution. Eventually, these HCHO column data should be used in a formal inverse modeling network with a regional CTM that accounts in a more sophisticated manner for the local relationship between isoprene emission and HCHO columns. Uncertainty in the isoprene oxidation chemistry, particularly under low-NO_x conditions [Palmer et al., 2003], may at that point represent the principal limitation in the overall approach.

Appendix A: GEOS-CHEM Model Description

[41] GEOS-CHEM is a global 3-D model of atmospheric composition, applied here to a tropospheric O₃-NO_x-VOC-aerosol simulation for 2001 [Park et al., 2004]. The simulation is driven by assimilated meteorological data from the Goddard Earth Observing System (GEOS-3) at the NASA Global Modeling and Assimilation Office (GMAO). The data have 6-hour temporal resolution (3-hour for surface variables and mixing depths) and 1° × 1° horizontal resolution. There are 48 sigma vertical levels, extending from the surface to 0.01 hPa. The boundary layer up to 2 km is resolved by nine layers with midpoints at 10, 45, 115, 220, 370, 580, 870, 1250, and 1740 m altitude for a column based at sea level. We use version 6.01.05 of GEOS-CHEM (www-as.harvard.edu/chemistry/trop/geos) with 2° × 2.5° horizontal resolution and the native GEOS-3 vertical resolution. The simulation is initialized in January 2001 with standard conditions [Bey et al., 2001]. Proper initialization of HCHO fields is achieved in a matter of weeks. Anthropogenic emissions in the model are described by Park et al. [2004]. Biogenic VOC emissions of isoprene, monoterpenes, and MBO are described in the text. There are also relatively large biogenic sources of acetone and methanol, which do not contribute significantly to HCHO column variability because of their long lifetimes [Palmer et al., 2003]. The chemical mechanism is that of Horowitz et al. [1998] with a number of updates [Bey et al., 2001; Fiore et al., 2002]. It includes a detailed representation of oxidation pathways for five nonmethane hydrocarbons (ethane, propane, lumped >C₃ alkanes, lumped >C₂ alkenes, and isoprene). Production of HCHO from α- and β-pinene are parameterized, as discussed in the main text. Numerical integration of the mechanism is done with a fast Gear solver [Jacobson and Turco, 1994]. Photolysis rates are computed using the Fast-J radiative transfer algorithm [Wild et al., 2000] which includes Rayleigh scattering as well as Mie scattering by clouds. We use monthly averaged UV surface albedo fields from [Herman and Celarier, 1997].

[42] **Acknowledgments.** We gratefully acknowledge Ted Russell (Georgia Tech), Bill Munger (Harvard), Paul Shepson (Purdue), Lance McCluney (EPA, NC), and Susan Zimmer-Dauphinee (EPA, GA) for providing data and for useful discussions. This work was supported by the NASA Atmospheric Chemistry Modeling and Analysis Program (ACMAP) and by the Atmospheric Chemistry Program of the U.S. National Science Foundation. We thank three anonymous reviewers who provided thorough and thoughtful comments.

References

- Abbot, D. S., P. I. Palmer, R. V. Martin, K. V. Chance, D. J. Jacob, and A. Guenther (2003), Seasonal and interannual variability of North American isoprene emissions as determined by formaldehyde column measurements from space, *Geophys. Res. Lett.*, *30*(17), 1886, doi:10.1029/2003GL017336.
- Bey, I., et al. (2001), Global modeling of tropospheric chemistry with assimilated meteorology: Model description and evaluation, *J. Geophys. Res.*, *106*, 23,073–23,096.
- Buermann, W., Y. Wang, J. Dong, L. Zhou, X. Zeng, R. E. Dickinson, C. S. Potter, and R. B. Myneni (2002), Analysis of a multiyear global vegetation leaf area index data set, *J. Geophys. Res.*, *107*(D22), 4646, doi:10.1029/2001JD000975.
- Chance, K., P. I. Palmer, R. J. D. Spurr, R. V. Martin, T. P. Kurosu, and D. J. Jacob (2000), Satellite observations of formaldehyde over North America from GOME, *Geophys. Res. Lett.*, *27*, 3461–3464.
- Chin, M., R. B. Rood, S.-J. Lin, J. F. Muller, and A. M. Thompson (2000), Atmospheric sulfur cycle simulated in the global model GOCART: Model description and global properties, *J. Geophys. Res.*, *105*, 24,671–24,687.
- Chin, M., et al. (2002), Tropospheric aerosol optical thickness from the GOCART model and comparisons with satellite and sunphotometer measurements, *J. Atmos. Sci.*, *59*, 461–483.
- Claeys, M., et al. (2004), Formation of secondary organic aerosols through photooxidation of isoprene, *Science*, *303*, 1173–1176.
- Fiore, A. M., D. J. Jacob, I. Bey, R. M. Yantosca, B. D. Field, and J. Wilkinson (2002), Background ozone over the United States in summer: Origin and contribution to pollution episodes, *J. Geophys. Res.*, *107*(D15), 4275, doi:10.1029/2001JD000982.
- Ginoux, P., M. Chin, I. Tegen, J. M. Prospero, B. Holben, O. Dubovik, and S.-J. Lin (2001), Sources and distributions of dust aerosols simulated with the GOCART model, *J. Geophys. Res.*, *106*, 20,255–20,274.
- Guenther, A., et al. (1995), A global model of natural volatile organic compound emissions, *J. Geophys. Res.*, *100*, 8873–8892.
- Guenther, A., B. Baugh, G. Brasseur, J. Greenberg, P. Harley, L. Klinger, D. Serca, and L. Vierling (1999), Isoprene emission estimates and uncertainties for the central African EXPRESSO study domain, *J. Geophys. Res.*, *104*, 30,625–30,639.
- Guenther, A. C., T. Pierce, B. Lamb, P. Harley, and R. Fall (2000), Natural emissions of non-methane volatile organic compounds, carbon monoxide, and oxides of nitrogen from North America, *Atmos. Environ.*, *34*, 2205–2230.
- Guenther, A. C., T. Karl, P. Harley, C. Wiedinmyer, P. I. Palmer, and C. Geron (2005), Estimates of global terrestrial isoprene emissions using MEGAN (Model of Emissions of Gases and Aerosols from Nature), *Atmos. Chem. Phys. Discuss.*, *6*, 107–173.
- Hasson, A. S., G. S. Tyndall, and J. J. Orlando (2004), A product yield study of the reaction of HO₂ radicals with ethyl peroxy (C₂H₅O₂), acetyl peroxy (CH₃C(O)O₂), and acetyl peroxy (CH₃C(O)CH₂O₂) radicals, *J. Phys. Chem.*, *108*, 5979–5989.
- Herman, J. R., and E. A. Celarier (1997), Earth surface reflectivity climatology at 340–380 nm from TOMS data, *J. Geophys. Res.*, *102*, 28,003–28,011.
- Hirsch, R. M., and E. J. Gilroy (1984), Methods of fitting a straight line to data: Examples in water resources, *Water Res. Bull.*, *20*, 705–711.
- Horowitz, L. W., J. Liang, G. M. Gardner, and D. J. Jacob (1998), Export of reactive nitrogen from North America during summertime: Sensitivity to hydrocarbon chemistry, *J. Geophys. Res.*, *103*, 13,451–13,476.
- Jacobson, M. Z., and R. P. Turco (1994), SMVGEAR: A sparse-matrix, vectorized Gear code for atmospheric models, *Atmos. Environ.*, *28*, 273–284.
- Jenkin, M. E., S. M. Saunders, V. Wagner, and M. J. Pilling (2003), Protocol for the development of the Master Chemical Mechanism, MCM v3 (part B): Tropospheric degradation of aromatic volatile organic compounds, *Atmos. Chem. Phys.*, *3*, 181–193.
- Koelemeijer, R. B. A., J. F. de Haan, and P. Stammes (2003), A database of spectral surface reflectivity of the Earth in the range 335–772 nm derived from 5.5 years of GOME observations, *J. Geophys. Res.*, *108*(D2), 4070, doi:10.1029/2002JD002429.
- Kurosu, T. P., K. Chance, and R. J. D. Spurr (1999), CRAG—Cloud retrieval algorithm for the European Space Agency's Global Ozone

- Monitoring Experiment, in *Proceedings of the European Symposium of Atmospheric Measurements from Space (ESAMS)*, pp. 513–521, European Space Agency, Noordwijk, Netherlands.
- Martin, R. V., et al. (2002), An improved retrieval of tropospheric nitrogen dioxide from GOME, *J. Geophys. Res.*, *107*(D20), 4437, doi:10.1029/2001JD001027.
- Martin, R. V., D. J. Jacob, K. V. Chance, T. P. Kurosu, P. I. Palmer, and M. J. Evans (2003), Global inventory of nitrogen oxide emissions constrained by space-based observations of NO₂ columns, *J. Geophys. Res.*, *108*(D17), 4537, doi:10.1029/2003JD003453.
- Martin, R. V., et al. (2004), Evaluation of GOME satellite measurements of tropospheric NO₂ and HCHO using regional data from aircraft campaigns in the southeastern United States, *J. Geophys. Res.*, *109*, D24307, doi:10.1029/2004JD004869.
- Palmer, P. I., et al. (2001), Air mass factor formulation for spectroscopic measurements from satellites: Application to formaldehyde retrievals from the Global Ozone Monitoring Experiment, *J. Geophys. Res.*, *106*, 14,539–14,550.
- Palmer, P. I., D. J. Jacob, A. M. Fiore, R. V. Martin, K. Chance, and T. P. Kurosu (2003), Mapping isoprene emissions over North America using formaldehyde column observations from space, *J. Geophys. Res.*, *108*(D6), 4180, doi:10.1029/2002JD002153.
- Park, R. J., D. J. Jacob, B. D. Field, R. M. Yantosca, and M. Chin (2004), Natural and transboundary pollution influences on sulfate-nitrate-ammonium aerosols in the United States: Implications for policy, *J. Geophys. Res.*, *109*, D15204, doi:10.1029/2003JD004473.
- Petron, G., P. Harley, J. Greenberg, and A. Guenther (2001), Seasonal temperature variations influence isoprene emission, *Geophys. Res. Lett.*, *28*, 1707–1710.
- Pressley, S., B. Lamb, H. Westberg, J. Flaherty, J. Chen, and C. Vogel (2005), Long-term isoprene flux measurements above a northern hardwood forest, *J. Geophys. Res.*, *110*, D07301, doi:10.1029/2004JD005523.
- Richter, A., and T. Wagner (2001), Diffuser plate spectral structures and their influence on GOME slant columns, technical report, Inst. Environ. Phys., Univ. Bremen, Bremen, Germany.
- Richter, A., F. Wittrock, A. Ladstetter-Weibenmayer, and J. P. Burrows (2002), GOME measurements of stratospheric and tropospheric BrO, *Adv. Space. Res.*, *29*, 1667–1672.
- Sanderson, M. G., C. D. Jones, W. J. Collins, C. E. Johnson, and R. G. Derwent (2003), Effect of climate change on isoprene emissions and surface ozone levels, *Geophys. Res. Lett.*, *30*(18), 1936, doi:10.1029/2003GL017642.
- Saunders, S. M., M. E. Jenkin, R. G. Derwent, and M. J. Pilling (2003), Protocol for the development of the Master Chemical Mechanism, MCM v3 (part A): Tropospheric degradation of non-aromatic volatile organic compounds, *Atmos. Chem. Phys.*, *3*, 161–180.
- Shim, C., Y. Wang, Y. Choi, P. I. Palmer, D. S. Abbot, and K. Chance (2005), Constraining global isoprene emissions with Global Ozone Monitoring Experiment (GOME) formaldehyde column measurements, *J. Geophys. Res.*, *110*, D24301, doi:10.1029/2004JD005629.
- Sprengnether, M., K. L. Demerjian, N. M. Donahue, and J. G. Anderson (2002), Product analysis of the OH oxidation of isoprene and 1,3-butadiene in the presence of NO, *J. Geophys. Res.*, *107*(D15), 4268, doi:10.1029/2001JD000716.
- Sumner, A. L., et al. (2001), A study of formaldehyde chemistry above a forest canopy, *J. Geophys. Res.*, *106*, 24,387–24,405.
- Thornton, J. A., et al. (2002), Observations of ozone production rates as a function of NO_x abundances and HO_x production rates in the Nashville urban plume, *J. Geophys. Res.*, *107*(D12), 4146, doi:10.1029/2001JD000932.
- Wang, K. Y., and D. E. Shallcross (2000), Modelling terrestrial biogenic isoprene fluxes and their potential impact on global chemical species using a coupled LSM-CTM model, *Atmos. Environ.*, *34*, 2909–2925.
- Wiedinmyer, C., et al. (2005), Ozarks Isoprene Experiment (OZIE): Measurements and modeling of the “isoprene volcano,” *J. Geophys. Res.*, *110*, D18307, doi:10.1029/2005JD005800.
- Wild, O., X. Zhu, and M. J. Prather (2000), Fast-J: Accurate simulations of in- and below-cloud photolysis in tropospheric chemistry models, *J. Atmos. Chem.*, *37*, 245–282.
- Zimmerman, P. R., R. B. Chatfield, J. Fishman, and P. J. Crutzen (1978), Estimates on production of CO and H₂ from oxidation of hydrocarbon emissions from vegetation, *Geophys. Res. Lett.*, *5*, 679–682.
-
- D. S. Abbot, T.-M. Fu, and D. J. Jacob, Division of Engineering and Applied Sciences, Harvard University, Cambridge, MA 02138, USA.
- K. Chance and T. P. Kurosu, Harvard-Smithsonian Center for Astrophysics, 60 Garden Street, Cambridge, MA 02138-1516, USA.
- A. Guenther and C. Wiedinmyer, National Center for Atmospheric Research, Boulder, CO 80303, USA.
- B. Lamb and S. N. Pressley, Department of Civil and Environmental Engineering, Washington State University, Pullman, WA 99164-5702, USA.
- P. I. Palmer, School of Earth and Environment, University of Leeds, Leeds, LS2 9JT, UK. (pip@env.leeds.ac.uk)
- M. J. Pilling and J. C. Stanton, Department of Chemistry, University of Leeds, Leeds LS2 9JT, UK.
- A. L. Sumner, Battelle, 505 King Avenue, Columbus, OH 43201, USA.